

# THE ROELAND PARKER

January, 2010

## Where Are You?

It is a pretty fair assumption that you know where you live. However, do your friends and relatives know where you live? How about delivery services and emergency personnel, can they find your home? It seems like a rather petty subject to bring up, but as I drive around Roeland Park, there are several homes that do not have address numbers on them. Likewise, there are many other homes that the numbers are hard to see because they are painted the same color as the house or in a location that is not as noticeable as they should be.

Then again, it really is not a petty subject. In an emergency, can anyone call for help and provide the correct address? Address numbers exist as a method for identifying houses, buildings and other business locations. In fact, it is an included requirement in the International Property Maintenance Code adopted by Roeland Park. This code states: "Buildings shall have approved address numbers placed in a position to be plainly legible and visible from the street or road fronting the property. These numbers shall contrast with their background. Address numbers shall be Arabic numerals or alphabet letters. Numbers shall be a minimum of 4 inches (102 mm) high with a minimum stroke width of 0.5 inch (12.7 mm)."

**Can delivery services or emergency personnel find your home?**

Typically, most address numbers are placed on the siding of the house near the front door. This location also has a light in the area that makes the numbers easy to read at night – if the light is on. Another favorite location is near the garage door, but your home may have yet another area that is more practicable to use. You have your choice of sizes and colors of numbers, and even where you locate them on your house – just remember these numbers are more for the convenience of others than for yourself and it is a code requirement!

Take a look at the houses on your street as you pass by them and the businesses you visit. See if you can readily identify those street addresses and then take a look at your home. Are your numbers easy to locate, identify and read? Or, are they missing altogether? Please take the time to make sure your address numbers are easy to find and read. Not only will this help delivery people and friends, but emergency personnel when time can be an issue.

**Inside this Issue...**

- Construction News:..... 2
- Are you Stumped?..... 2
- Calendar ..... 3
- Contact Information ..... Back



### City Seeks Applications for Committee Vacancies

The City of Roeland Park is seeking nominations to fill open seats on the city's Sustainability Committee and the Parks/Tree Board Advisory Committee. The appointments are for 1 year terms effective January 1, 2010. Residents interested in getting involved should submit a short background summary (i.e.; interests, hobby's, occupation, a little bit about themselves) by January 31, 2010 to Debra Mootz, City Clerk at [dlmootz@roelandpark.org](mailto:dlmootz@roelandpark.org) or you may call her at (913) 722-2000.

### Trash Containers

Reminder that trash containers are to be placed in a location that cannot be seen from the street. Visual containers are considered a violation of City Code.



January, 2010

## Are You Stumped?

### Construction News:

**RC12-012 Stormwater Project**—The project is finishing up and looks great. There are some punch list items and finishing details that will need to be completed in the months to come.

**RC12-014 Stormwater Project**—Construction is expected to begin after the first of the year at the low end of the project (55th and Roe Blvd area). The City will be holding a Meet the Contractor public information meeting on January 12th, 6pm at the Roeland Park Community Center. This will be your opportunity to talk with the Contractors, Engineers and City Personnel about any issues you need to make us aware of prior to construction (i.e., pets, sump pumps, irrigation systems, physical handicaps).

Please be assured that during construction of City projects, emergency vehicles will always have access to your property.

In the past, many of our citizens have talked or worked with our city forester concerning their trees. In many of these instances, the tree or trees had to be taken down and removed from the property. The forester always emphasized the need to have the stumps ground once a tree has been cut down. Other residents have received violation notices concerning tree stumps left in the yard after a tree has long since been removed.

The tree stump issue seems like a lot to do about nothing and just an added expense to many homeowners. However, it really is an important issue that needs addressed. Tree stumps left behind will eventually decay and disappear into the ground, but not without causing some problems.

Stumps left in the ground to rot and decay are an attractive source of food for termites.

These stumps are also inviting for carpenter ants and other insects to set up housekeeping. In essence, the tree stump is inviting these pests into your yard and closer to your house where they can really cause some serious damage.

Another problem these stumps cause are landscape issues. As the roots and stumps decay, ruts and holes are left in the yard. These are often discovered when someone steps into an area where these stumps were and their foot sinks into the ground. This past summer the city was called about a sink hole in a front yard. When we went to investigate it was plain to see that this hole was once where a tree stood. The ruts left in the yard from the roots were 4 – 5 inches deep – a real ankle twister! It was obvious the tree that was removed a few years ago was a very substantial tree. The homeowner then had the task of digging up the remaining stump, backfilling the holes and ruts with soil and then smoothing out the yard again.

So really, having the stump removed isn't just an added expense. In fact, having the stump removed or ground down quickly after the tree is taken down can actually save you money in the long run and possibly help save your property from unwanted insect damage and landscape issues. Other advantages include getting that tree behind you and making it history rather than a recurring nightmare.

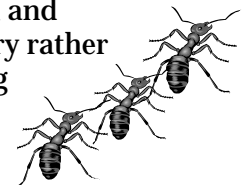


## City Hall Art Gallery

**January—J.R Hamil**, recognized as one of the most prominent watercolor artists in the country. The love and respect for the region is shown in his depiction of his native land. The rolling hills of Kansas, the plains of Texas, the corn fields of Iowa, the rivers, creeks and streams of the Great Plains are mirrored through his beautiful paintings.

**February—Inge Houston**, a Kansas City based artist, wants to warm your heart with oil paintings of Kansas City landmarks. She's van Gogh inspired. In her paintings as well as photography, Inge carefully chooses her colors to open your eyes to the natural beauty found in God's creation.

Most pieces are available for purchase directly from the individual artists.



RC12-014 Stormwater  
Meet the Contractor  
January 12 - 6pm  
Community Center  
4850 Rosewood Dr



## Reuse, Reduce and Recycle!

It is becoming easier and more convenient to recycle a variety of items in our area, especially now with the Ripple glass bins around the metro. In addition, Goodwill is now accepting electronics for recycling at no cost. To find out where you can recycle or if the item can be recycled go to [www.recyclespot.org](http://www.recyclespot.org). Links to Goodwill, RecycleSpot and many others can be found at [www.roelandpark.net](http://www.roelandpark.net)—just click on the recycle logo.

Another great place to make sure that household items and clothing get reused and/or recycled is one of the many local second hand stores. Get to know a shop's practices by getting information from a manager about what they do with items that they do not sell in the store. Many smaller stores give clothing and other items to shelters, and to larger organizations such as the Vietnam Veterans or Goodwill who in turn have various outlets for unusable items such as sending clothing overseas or to textile businesses who turn old clothing into rags. A little fact gathering will assure you that your donations are used in the most productive and responsible way and let stores know that this kind of distribution is important to their patrons.

### Official City Newspaper

Public Notices for the City will be published on Tuesdays. If you wish to view *The Legal Record* online, a link is provided on the city's website. Paper copies are available at City Hall.



### Spring Community Vegetable Gardens:

Are you interested in having a vegetable garden but don't have the space, sufficient light, or do you just enjoy the idea of gardening in a community? St Pius Church at 5500 Woodson has a community garden with 10' by 10' plots still available for next Spring. The cost is \$15 for one plot and \$25 for two. Call the St. Pius office at 913-432-2547 to get more information about the rules and an application.

### Calendar

#### 01/01/10...City Offices Closed

01/12/10...6pm—RC12-014 - Meet the Contractor - RPCC

01/12/10...7pm—Ward III Meeting - RPCC

#### Committee Meetings (standard times):

City Council Meetings—1 & 3rd Monday at 7pm

Public Works/Public Safety—2nd Monday—6pm

Admin and Finance—4th Monday—6pm

City Hall Improvement—Tuesdays at Noon (AN)

Parks—2nd Wednesday—6pm

Sustainability—4th Wednesday—6pm

Planning Commission—3rd Tuesday—7pm (AN)

*Roeland Park Community Center Multipurpose Room (RPCC)  
As Needed (AN)*

### Council Actions:

**Roeland Park Elementary School**—Approved advertising as “For Sale”

**Holiday Schedule**—Approved adding Veteran’s Day as an official 2010 City Holiday

**RC12-014 Stormwater**—Approved a contract with Kissick Construction for the RC12-014 stormwater project.

Ward III Meeting  
January 12 - 7pm  
Community Center  
4850 Rosewood Dr



**Roeland Park City Hall**  
**4600 West 51st St**  
**Roeland Park, Ks 66205**

Presorted Std.  
 U.S. Postage  
**PAID**  
 Boelte Hall

**New to Roeland Park,  
 Welcome!**

Please call City Hall for a new resident packet. The packet contains valuable information on:

- Animals Registration
- Home Repair/Remodeling
- Voter Registration
- Recycling/Trash Information
- Community Events & Activities

**E-Newsletter:**

Would you like to STOP the paper copy of this newsletter? Sign up online for *The Roeland Parker* emailed directly to you as soon as it is available or you can view it online at:

[www.roelandpark.net](http://www.roelandpark.net)

**Roeland Park City Hall Directory**

4600 West 51st Street, Roeland Park, KS 66205  
 Phone (913) 722-2600

**City Hall Hours** • Monday-Thursday 7 am—6 pm • Friday 7 am—5 pm

**Important Phone Numbers:**

Animal Control.....	782-0720
Aquatic Center.....	432-1377
AT&T .....	800-288-2747
Community Center .....	826-3130
Driver License Examiner (Mission Office).....	432-2266
Easy Ride .....	397-7300
Fire Dept (non emergency) .....	432-1105
Hazardous Waste.....	715-6900
Johnson Co Auto Registration .....	826-1800
Johnson Co Library – Cedar Roe.....	384-8590
Johnson Co Wastewater .....	432-3820
Kansas City Power & Light.....	816-471-5275
Kansas Gas Service.....	800-794-4780
Municipal Court .....	677-3389
Poison Control Center.....	800-222-1222
Roesland Elementary.....	993-4700
Shawnee Mission Post Office .....	831-5304
Shawnee Mission School District.....	993-6200
Time Warner.....	913-451-6464
Town and Country.....	816-380-5595
Water District #1 of JoCo .....	895-5500

Mayor  
 Adrienne Foster  
 908-1709  
[afoster@roelandpark.org](mailto:afoster@roelandpark.org)

City Administrator  
 John Carter  
 722-2600  
[jcarter@roelandpark.org](mailto:jcarter@roelandpark.org)

Police Department  
 Chief of Police, Rex Taylor  
 677-3363  
[rtaylor@roelandpark.org](mailto:rtaylor@roelandpark.org)

Public Works Department  
 Director, Pat Mundis  
 722-5435  
[pmundis@roelandpark.org](mailto:pmundis@roelandpark.org)

City Clerk/Finance  
 Director, Debra Mootz  
 722-2600  
[dlmootz@roelandpark.org](mailto:dlmootz@roelandpark.org)

**Ward 1 Councilmembers**

Betsy Mellor <a href="mailto:emellor@roelandpark.org">emellor@roelandpark.org</a> 281-5650	Toni Hull <a href="mailto:thull@roelandpark.org">thull@roelandpark.org</a> 362-2325
--	---

**Ward 2 Councilmembers**

Robert Meyers <a href="mailto:rmeyers@fusemail.com">rmeyers@fusemail.com</a> 384-1923	Scott Gregory <a href="mailto:sgregory@scottgregorycpa.com">sgregory@scottgregorycpa.com</a> 384-6360
---	---

**Ward 3 Councilmembers**

Mark Kohles <a href="mailto:mkohles@burnsmcd.com">mkohles@burnsmcd.com</a> 831-2773	Megan England <a href="mailto:mengland@roelandpark.org">mengland@roelandpark.org</a> 236-7689
---	---

**Ward 4 Councilmembers**

Bill Art <a href="mailto:bart@roelandpark.org">bart@roelandpark.org</a> 722-2600	Marek Gliniecki <a href="mailto:mgliniecki@roelandpark.org">mgliniecki@roelandpark.org</a> 262-0659
--	---